

Prof. Dan Mishmar

evolution and disease converge in the mitochondria

MISHMAR LAB

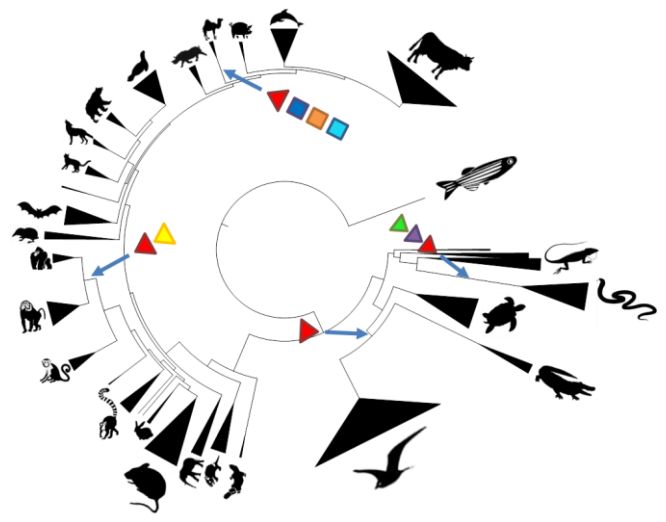
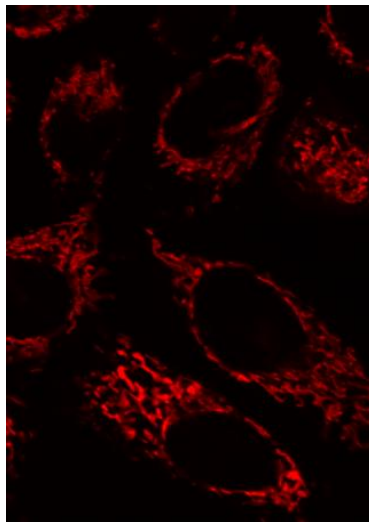
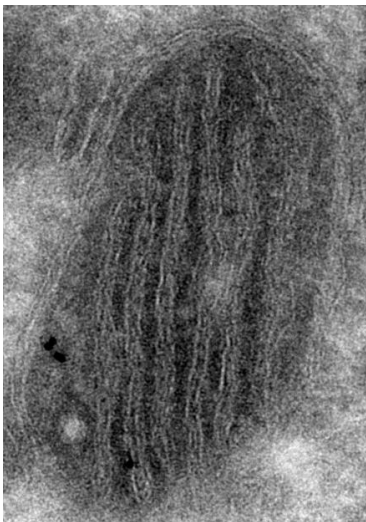


Join us for exciting research in genetics and evolution of the mitochondria!

A potential PhD Students? A potential Postdoc?

Our lab study genomics and regulation of the mitochondria in evolution and disease.

We use cutting edge genomics tech in both experimental and computational breakthrough research. **YOU ARE INVITED!**



Need further information? Want to know us better?
Please contact Prof. Dan Mishmar, Department of Life Sciences, BGU

Email: dmishmar@bgu.ac.il

<https://lifewp.bgu.ac.il/wp/dmishmar/>