

IEEE Geoscience and Remote Sensing Society (IEEE GRSS)





Geoscience and Remote Sensing Society: IEEE GRSS

- **What is GRSS**
 - One of 38 Societies of IEEE
 - Global: 3400 Members in 94 Countries
- **What does it do**
 - Remote Sensing and Geospatial Information
 - Science, Engineering, Applications, Education



Vision

To be the leading society in science, engineering, applications, and education for the remote sensing and geospatial information community.

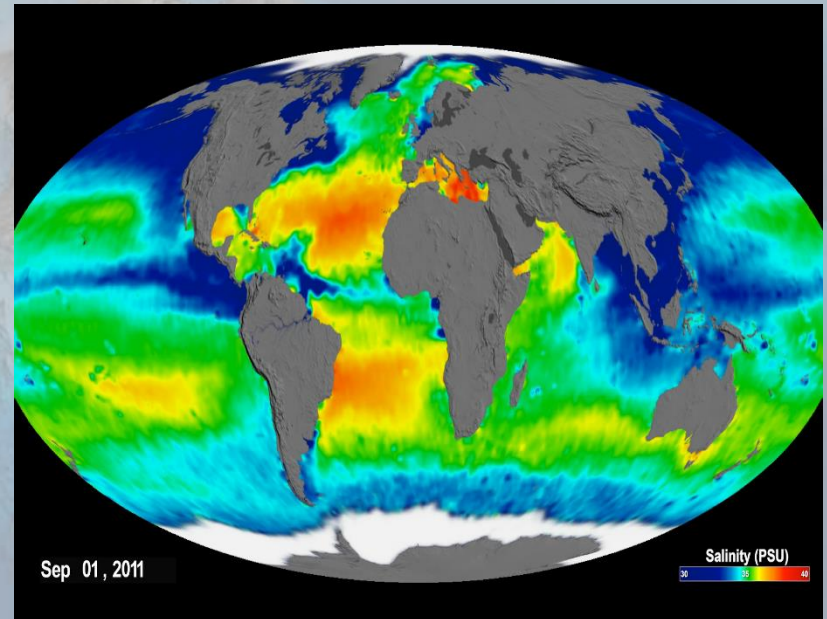
Geoscience and Remote Sensing

Sample Topics:

- Optical imaging
- Hyperspectral imaging systems
- Lidar systems and applications
- Radar altimetry and applications
- Microwave imaging radar systems
- Microwave and mm-wave radiometer systems
- Geospatial information processing

Geoscience and Remote Sensing Sample Applications

- Remote Sensing of Land
- Biomass Monitoring
- Monitoring Natural Hazards
- Urban Studies/Planning
- Electromagnetic Theory
- & Applications
- Sensors and Platforms
- Remote Sensing of Atmosphere & Ocean
- Education and Public Policy



Value Proposition – Why should you join?

- **Develop relationships with world leaders in remote sensing**
- **Work with like-minded researchers and developers to make a difference in the world through remote sensing**
- **Gain visibility and access to international programs and research opportunities**
- **Connect to industry as a market for your remote sensing ideas and as potential employer**
- **Benefit from the stimulating mix of theory and practice in remote sensing**
- **Benefit from the broad spectrum of interests of GRSS members – optical, microwave, hyperspectral, systems**
- **Apply for student research and travel scholarships**



Benefits to Members

Regional Liaison

Specialty Symposia

**Industry Liaison
and Newsletter**

Awards

IGARSS

Book Series

Journals

TGRS, GRSL, J-STARS

**Web based
services**

Chapters

**Distinguished
Speakers Program**

Newsletter

**Educational
Services**

YP Program

Technical Committees



It's about the people in GRSS

- Strong academic connection
- Strong common passion for science and technology to understand our planet
- Lifelong international friendships
- Career-leveraging standing among peers
- Fun conferences and associated activities



Elements of GRSS



IEEE GRSS Publications

- JOURNALS
- CONFERENCE PROCEEDINGS
- MAGAZINE
- eNEWSLETTER
- BOOK SERIES

IEEE GRSS Journals

TGRS - Transactions
First Published in 1963
599 papers last year

- ✓ High Quality
- ✓ High Impact
- ✓ Fully Edited

GRSL - Letters
First Published 2004
564 papers last year

J-STARS
First Published in 2008
571 papers last year





Geoscience and Remote Sensing Society

GRSS Magazine

*4 Issues/year plus an
eNewsletter*





About the Publication

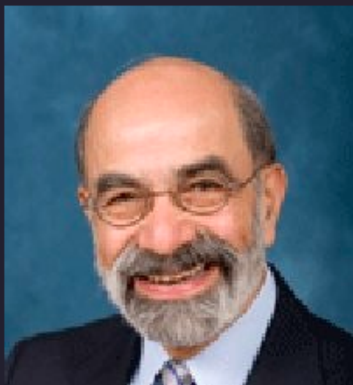
IEEE REMOTE SENSING CODE LIBRARY is an on-line curated repository of software related to remote sensing missions, instruments, processing, and applications.

Software should be relevant to the theory, concepts, and techniques of science and engineering as applied to sensing the earth, oceans, atmosphere, and space, and the processing, interpretation, and dissemination of this information.

As soon as software is accepted and materials are available at IEEE, they will appear online and be indexed.

Editor

Prof. Fawwaz T. Ulaby



Institution The University of Michigan

Country USA

Contact ulaby@umich.edu

Bio Professor Fawwaz T. Ulaby is the Emmett Leith Distinguished University Professor of Electrical Engineering and Computer Science at the University of Michigan, where he had also served as Vice President for Research from 1999 to 2005. He is a member of the National Academy of Engineering, Fellow of IEEE and AAAS, and serves on several scientific boards and commissions.

[VIEW FULL BIO](#)

Related Information

- [Main Site](#)
- [Submission hints](#)
- [ORCID Requirements](#)
- [Volunteer to be a reviewer](#)
- [SGRS Associate Editors](#)

Fees

There are no fees for submissions to this site.

Submission Information

Prospective authors should submit electronically at: <https://rscl-grss.org/submit.php>

Questions concerning the submission process or subject material should be addressed to editor@rscl-grss.org.

GRSS Conferences

IGARSS: International Geoscience and Remote Sensing Symposium – GRSS Flagship Conference

Microrad + other small conferences and symposia



- ✓ 2000-3000 attendees
- ✓ Venue alternates: Americas, Asia, Europe
- ✓ 2018 - Spain



Geoscience and Remote Sensing Society



tees

established a number of Technical Committees to
of member technical interests. Activities of the
scientific topic, organization of thematic
ization of special sessions at IGARSS along with
participants. In the following a list of current
and main mission are provided.

ical Committee (ESI TC) is to advance the
e sensing, to provide a venue for ESI professionals
e technology advice to major national and
rmation

JOIN GRSS

Recent News

- » International Workshop on Compressed Sensing applied to Radar, Multimodal Sensing, and Imaging.
- » Summer School on Radar/SAR
- » IGARSS Call for Proposals

Technical Committees

BACK

Technical Committees
Overview

Earth Science Informatics

Image Analysis & Data
Fusion

Frequency Allocations in
Remote Sensing

G

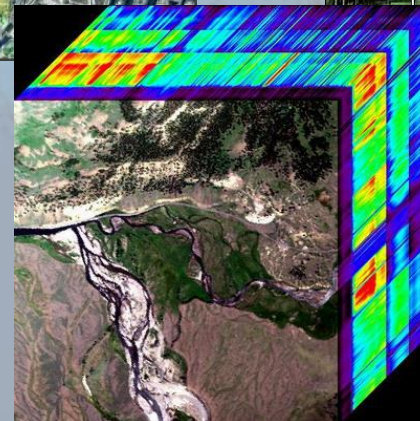
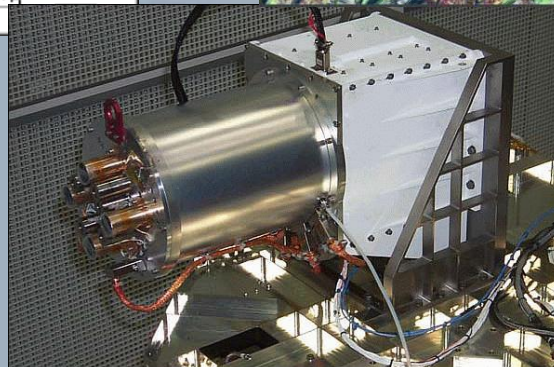
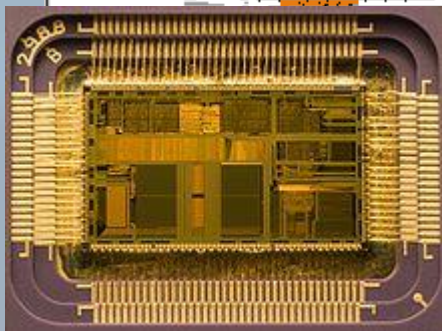
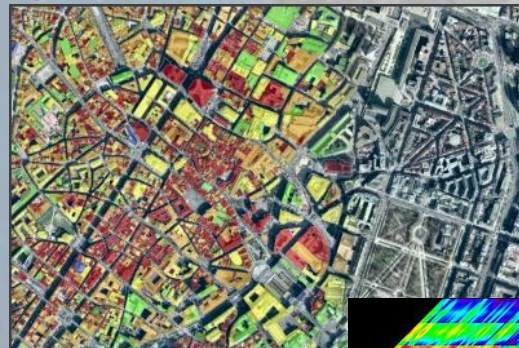
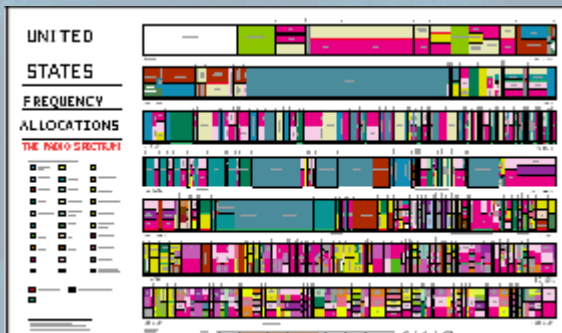
Instrumentation and
Future Technologies

Geoscience Spaceborne
Imaging Spectroscopy

Modeling in Remote
Sensing

GRSS Technical Committees

- FARS TC: Frequency Allocations in Remote Sensing
- IFT TC: Instrumentation and Future Technologies
- IADF TC: Image Analysis and Data Fusion
- ESI TC: Earth Science Informatics
- ISIS TC: Int'l Spaceborne Imaging Spectroscopy





Education

- On-Line Audio Lectures
- On-line Tutorials
- Live Broadcasts from IGARSS and workshops
- Student Travel Grants
- Distinguished Speakers Program
- Conferences, Workshops, on-line PhD thesis library

Web: www.grss-ieee.org

The screenshot displays the IEEE GRSS Education page. At the top, the IEEE GRSS logo and the text 'Geoscience and Remote Sensing Society' are visible. Below the logo, there is a navigation bar with links for HOME, CONFERENCES, PUBLICATIONS, EDUCATION, COMMUNITY, and ABOUT. The main content area is titled 'Education' and features a sidebar with links to 'Talks', 'Book a Speaker', 'Breaded Terminology', 'Exhibits', 'Tutorials and Documents', 'PhD Theses', and 'JGSA Repository'. The main content area is titled 'Talks' and lists several presentations. Each presentation includes a title, speaker, institution, event, category, and tags. There are also links to 'Watch Online' and 'Download' for each talk. The talks listed are: 'Preliminary Results of the Advanced L-Band Transmission and Reflection Observation of the Sea Surface (ALBATROSS) Field Experiments', 'Toward Errors in Tropical Forest Structure Parameters Estimated from Repeat-Track Polarimetric InSAR at L-band', 'Forest Vertical Structure Estimation Using Coherence Tomography Coupled to a Micro-Ecological Scattering Model', 'The Next Wave: Laser Sound for Global Measurements of CO2 Concentration from an Orbiting Platform', and 'Recent Advances in Doppler Lidar Instrument Technology at NASA's Goddard Space Flight Center'.

- K12

- PhD

- YP

Introduction to Remote Sensing

1. How to observe the Earth from space



2. Remote Sensors



3. Passive Remote Sensors



4. Active Remote Sensors



5. Understanding Platforms and Orbits



Distinguished Lecture Program

- **Objectives:**
 - Support GRSS Chapter Activities
 - Provide Interesting Speakers/Topics for Chapter Meetings



Akira Hirose



Alejandro Frery



Carlos Scavuzzo



Christopher J. Ruf



Geoscience and Remote Sensing Society

GRSS Chapters



GRSS Chapter Activities



IEEE Geoscience and Remote Sensing Society Membership



The fields of interest of the GRS Society are the theory, concepts, and techniques of science and engineering as they apply to the remote sensing of the earth, oceans, atmosphere, and space, as well as the processing, interpretation and dissemination of this information. The society sponsors various conferences throughout the year, most notably the annual International Geoscience and Remote Sensing Symposium. If you wish to purchase additional copies of publications included in your membership, please contact www.ieee.org/contactcenter.

IEEE Societies provide access to current information, opportunities to network with peers, and enhancement of the worldwide value of your profession. IEEE members receive special prices for Society memberships. If you are not an IEEE member, you may wish to join as an Affiliate.

Website:

<http://www.grss-ieee.org>

☒ IEEE Geoscience and Remote Sensing Society Membership

Membership Pricing

IEEE professional member	US\$19.00
IEEE student member	US\$10.00
Society affiliate	US\$94.00

[Sign in to see available discounts.](#)

☒ Add IEEE membership

Your country/region :

Israel

[Why we need this](#)

IEEE Membership Prices

- | | |
|---|-------------------|
| <input checked="" type="radio"/> Professional - Traditional | US\$163.00 |
| <input type="radio"/> Student Member | US\$27.00 |

Add item(s)

Questionnaire

IEEE Member					
Ahmed	Umy	umy.ahmed@gmail.com	Kennan	Richard	richardr@gmail.com
Asaf	Blair	asaf@mediam.org.il	Roberta	Dir	dir@geog.ucsb.edu
August	Wahab	august.wahab@gmail.com	Rotman	Ruth	rotmanr@tel.co.il
Auster	Shmuel	auster@tel.co.il	Rubinstein	Hilal	hilal.goldm@gmail.com
Bauer	Kosman	rbauer@tel.co.il	Sadeh	Sadron	sadron@post.bgu.ac.il
Bong	Amir	abong@eng.tau.ac.il	Scheerzman	Ben	ben.scheerzman@gmail.com
Bonfante	Antonella	antonella.bonfante@gmail.com	Segal	Meam	segal@imageontel.com
Chakraborty	Danid	danchak@bgu.ac.il	Shari	Uzer	guzersha.co@gmail.com
Dayan	Ita	itadayan@gmail.com	Shilo	Rot	rot@planetronichem.com
Falgoutch	Tal	tal.falgoutch@tel.co.il	Shmoryahu	Asaf	shmoryahu@tel.co.il
Goldberg	Asaf	goldberg-goldbergasaf@gmail.com	Shmuel	Mark	marksh@eng.tau.ac.il
Goldental	Amir	amir.goldental@gmail.com	Stern	Ashton	stern@bgu.ac.il
Harital	Itan	agurital@tel.co.il	Tisch	Shlomo	szach1@gmail.com
Morad	Itan	shmorad@tel.co.il	Tudob	Asnoam	Asnoam.Tudob@tel.co.il
Morad	Mayan	mayanmorad@gmail.com	Tur	Elisheva	tur@post.bgu.ac.il
Mosser	Meir	mosserm@tel.co.il	Wela	Gera	geram@tel.bgu.ac.il
Richard Tamar	Kas	richardm@tel.co.il	Yedra	El	eyedra@tel.co.il
Reit	Asaf	asafreit@baskint.net	Yishar	Ami	ayishar@gmail.com
Raplan	Shai	raplan@post.bgu.ac.il	Yonina	Elzer	yonina@ee.bodnion.ac.il
Wofsky	Umy	umy.wofsky@gmail.com	Zakewitz	Zeev	zakevitz@eng.tau.ac.il
Pertone	Michael	miked@cityandspice.com			
Prifman	Tal	tal_prifman@med.ac.il			

**IEEE Geoscience and
Remote Sensing Society**

IEEE GRSS

www.grss-ieee.org

