

Globalization and internationalization: The case of a bi-national third sector organization: A model that can be applied elsewhere?

Alan S. York, Ph.D, Professional Committee member, Elem-Israel; School of Social Work, Bar-Ilan University;

Roni Berger, Ph.D, Professional Committee member, Elem-America; Adelphi University School of Social Work;

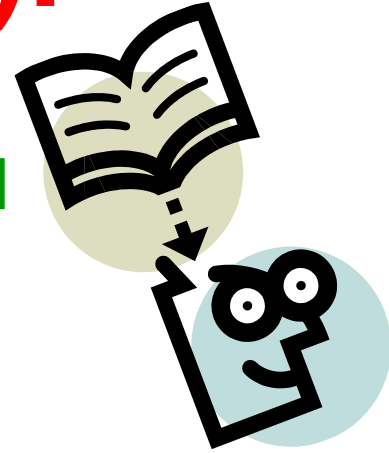
Orly Calderon, Psych.D, Professional Committee member, Elem-America; Social Work Dept., Long Island University

Tzion Gabai, MSW, CEO Elem-Israel.



(1) History and Present State of the Organization(s):

- * The Founding of Elem-America & Elem-Israel
- * Elem-Israel and Elem-America today: Staff, Volunteers, Branches and Budget

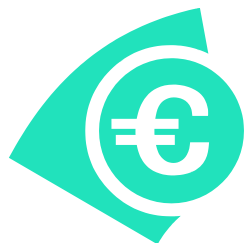


(2) Objectives and Activities:

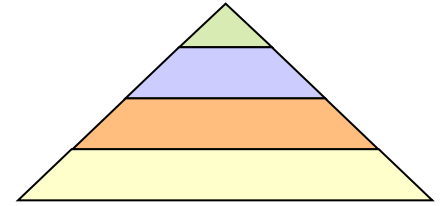
* Elem-Israel:
Services to Youth in Israel



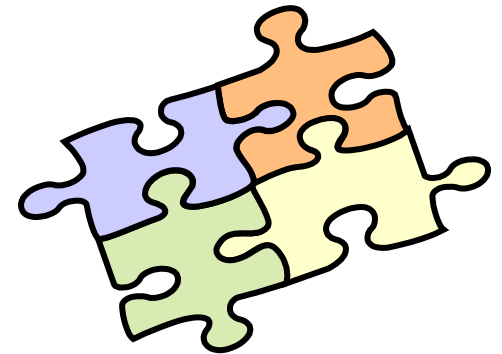
* Elem-America:
Collaboration, Consultancy,
and Fund-Raising for Youth in Israel



(3) Structure and Governance



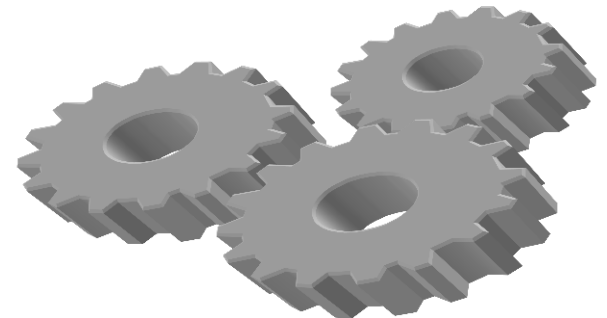
* Elem-Israel: Board, Professional Committee, other committees, CEO & Steering Committee, Branches



* Elem-America: Board, Professional Committee, other committees

(4) The Connections between the two Elems:

- * Joint Membership
- * Funding
- * Delegations & Visits
- * Professional Committee
- * Board Meetings
- * Other Committees



(5) Conclusions, Lessons and Implications:



- * Real Partnership and Collaboration
- * Professional Advice and Funding
- * Application of Model to Third Sector across Diasporas
- * Application of Model to Third Sector in Bi- and Multi-National Societies

