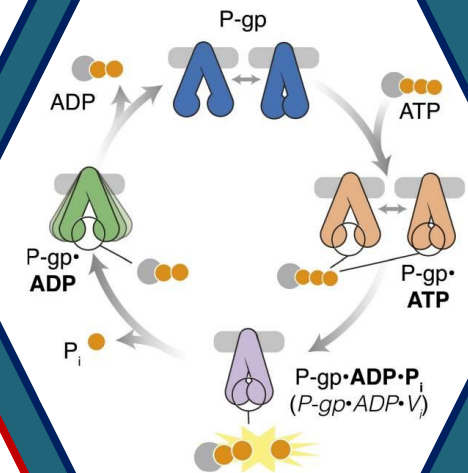
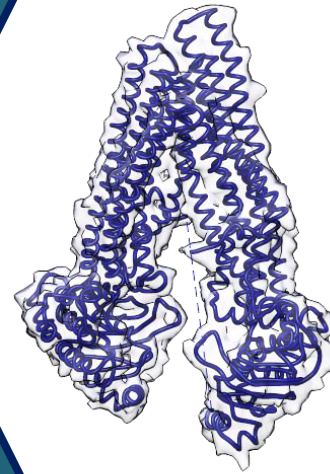


# Structural Biophysics of Membrane Proteins

Cryo-EM @  
BGU



**The Lab of Gabriel Frank is now recruiting PhD and MSc Students**

We use Cryo-EM and spectroscopy to understand the function of membrane machinery. We seek highly motivated students to join our ongoing projects:

Structure-function relations in ABC-transporters and host's response to viral fusion machinery

[frankg@bgu.ac.il](mailto:frankg@bgu.ac.il)

08-6428621

08-6428852

