



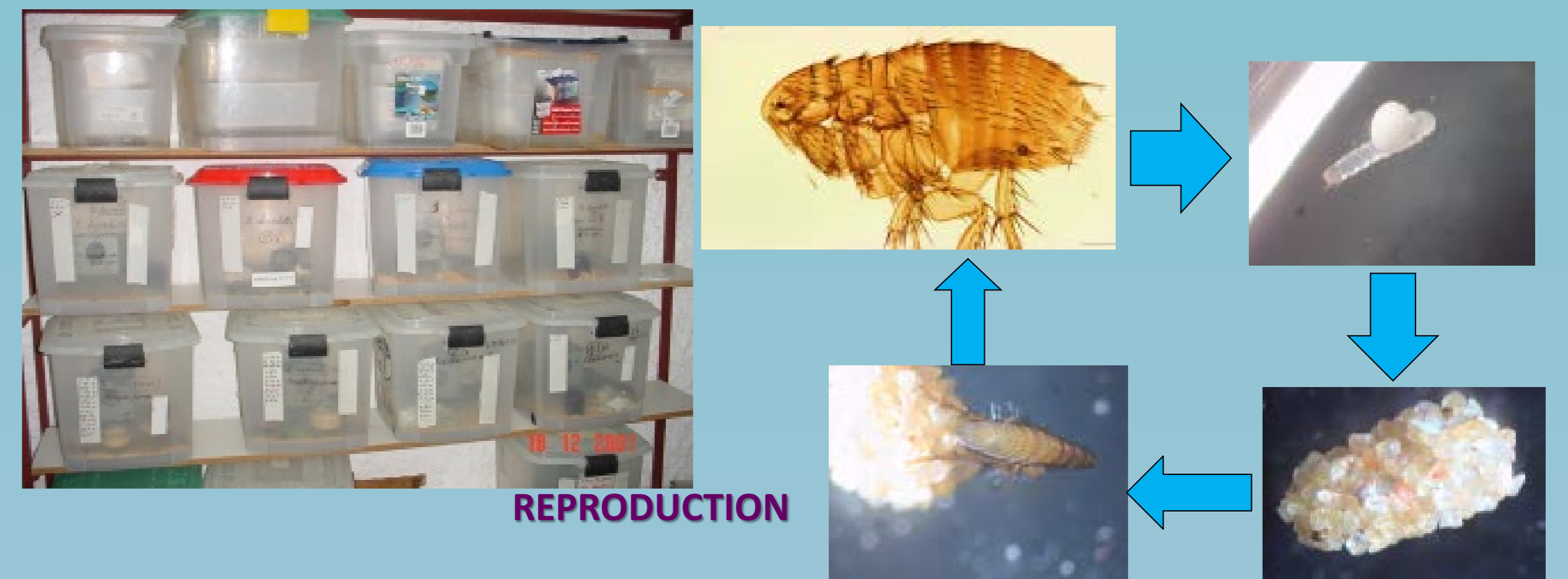
# Laboratory of Ecological and Evolutionary Parasitology



The Swiss Institute for Dryland Environmental and Energy Research

## UNIQUE:

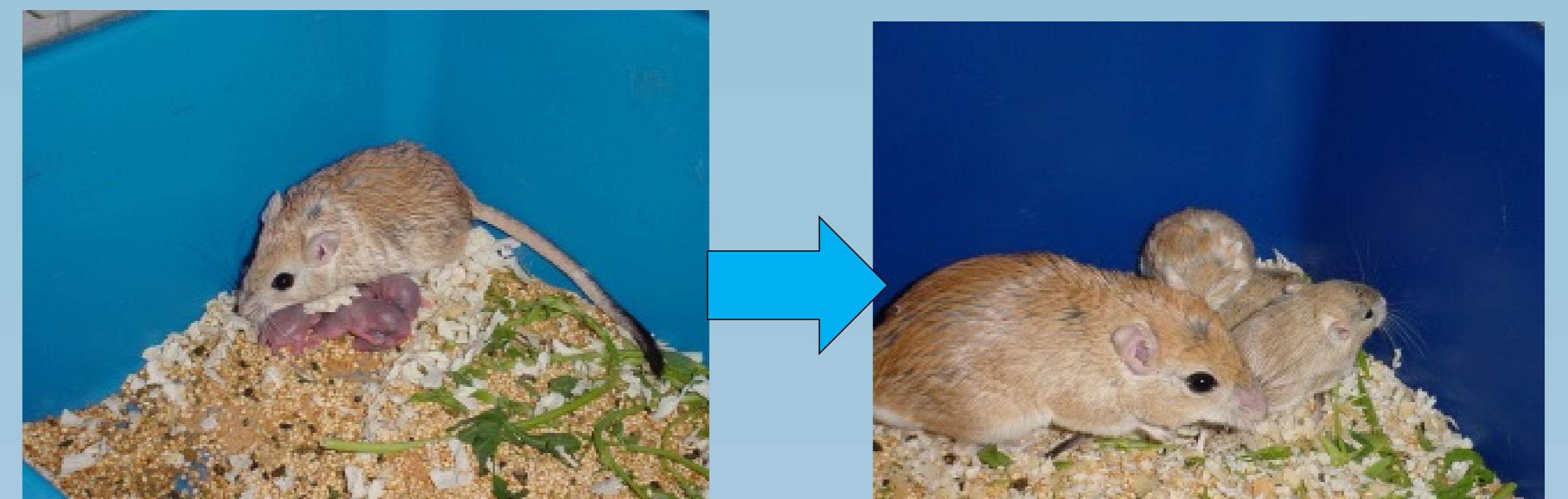
- (a) Maintenance and breeding of **FOUR FLEA SPECIES** on their **NATURAL HOSTS**
- (b) Maintenance and breeding of **SEVEN RODENT SPECIES**
- (c) Opportunities to **MODEL NATURAL SITUATIONS**, to ask many **QUESTIONS** and to test many **HYPOTHESES**



## METABOLIC RATE



## BEHAVIOUR



## RESEARCH QUESTIONS:

- How did a parasite and a host co-evolve?
- Does biodiversity of hosts determine biodiversity of parasites?
- What are the evolutionary patterns of parasite diversity?
- How are abundances of a host and a parasite relate?
- Do parasites always negatively affect their hosts?
- What is the link between host's behavioral and physiological responses to a parasite?
- What are physiological responses of a host to a parasite and of a parasite to a host?
- How does energetic physiology of parasite depend on a host it exploits?
- What are the effects of pathogens on their vectors?

Fleas-small mammal system is the best **model of parasite-host associations**

We combine **experimental** work on physiological, **field** work on ecological, and **comparative** or **meta-analyses** on biogeographical or evolutionary questions



krasnov@bgu.ac.il  
khokh@bgu.ac.il



## COLLABORATIONS

## RESULTS:

Journal Publications > 150  
 Monographs - 1  
 Collective volumes - 2