

# The Center for Women's Health Studies and Promotion at Ben-Gurion University of the Negev



המרכז לחקר וקידום  
בריאות האישה

The BGU Center for Women's Health  
Studies and Promotion



Ms. Limor Niego, Prof. Julie Cwikel & Dahlia Peretz (Soroka Hospital)  
representing our Mom to Mom program which was selected as one of the  
outstanding volunteer organizations for 2015 by the Beer-Sheva

Municipality

## Annual Report – 2015

אוניברסיטת בן-גוריון בנגב  
Ben-Gurion University of the Negev



THE BEN-GURION UNIVERSITY OF THE NEGEV  
CENTER FOR WOMEN'S  
HEALTH STUDIES AND PROMOTION  
ANNUAL REPORT 2015

1. **Name of the Center:** THE BEN-GURION UNIVERSITY OF THE NEGEV  
CENTER FOR WOMEN'S HEALTH STUDIES AND PROMOTION

2. **Center Directors:** Dr. Dorit Segal-Engelchin and Prof. Julie Cwikel, PhD, The  
Charlotte B. and Jack J. Spitzer Department of Social Work

3. **Center Advisory Board**

Prof. Dan Blumberg, Vice President and Dean for Research and Development

Prof. David Newman, Dean of the Faculty of Humanities and Social Sciences

Prof. Amos Katz, MD, Dean of the Faculty of Health Sciences

Prof. Naama Atzaba-Poria, Department of Behavioral Sciences

Dr. Rivka Berger, MD, Internal and Behavioral Medicine

Prof. Aya Biderman, MD, Family Medicine

Dr. David Geffen, MD, Oncology, Soroka University Medical Center

Dr. Leeat Granek, PhD, Department of Medical Sociology

Prof. Ilana Harman-Boehm, MD, Internal Medicine

Dr. Efrat Huss, Department of Social Work

Dr. Esther Iecovitz, Department of Gerontology

Prof. Ora Kofman, Department of Behavioral Sciences

Ms. Orly Liberman, Recanati School of Nursing

Dr. Noah Liel, MD, Cardiology, Department of Internal Medical

Dr. Sheryl E. Mendlinger, Northeastern University, International Relations

Dr. Hagit Perez, Department of Epidemiology

Prof. Orly Sarid, Department of Social Work

Prof. Ilana Shoham-Vardi, Department of Epidemiology

Ms. Sheila Warshawsky, MS, Faculty of Health Sciences

Dr. Yanna Shraga, Department of Social Work

#### 4. Center Steering Committee

Prof. Aya Biderman, MD, Family Medicine

Prof. Julie Cwikel, Charlotte B. and Jack J. Spitzer Department of Social Work

Prof. Ilana Harman-Boehm, MD, Internal Medicine

Dr. Efrat Huss, Charlotte B. and Jack J. Spitzer Department of Social Work

Ms. Orly Liberman, Recanati School of Nursing

Dr. Hagit Perez, Department of Epidemiology

Prof. Orly Sarid, Charlotte B. and Jack J. Spitzer Department of Social Work

Dr. Dorit Segal–Engelchin, Charlotte B. and Jack J. Spitzer Department of Social Work

Prof. Ilana Shoham-Vardi, Department of Epidemiology

Ms. Sheila Warshawsky, MS, Faculty of Health Sciences

---

### *The Center Acknowledges its Generous Supporters*

*The work of our Center would not be possible without the generosity and support of a community of donors throughout the world. They allow us to carry on our work with women, mothers and families throughout the Negev. This year marks the 15<sup>th</sup> year of activities in the Center and we know that this type of continuity would not be possible without you. We raise a toast to the vision and commitment that our supporters demonstrate, in contributing to "tikkun olam", making the Negev and Israel a better place for all its citizens. We would be delighted to meet you and show you our work, if you should visit Israel in the coming year.*



## **Words from the Director, Dr. Dorit Segal-Engelchin**

Approximately three months ago, upon being appointed head of the Spitzer Department of Social Work at Ben-Gurion University of the Negev, I decided to end my term as chair of the Center for Women's Health Studies and Promotion – a position I have filled with great pride over the last two years. During this time I was able to add new dimensions to the center's research and community activities. One such example is our diving deep into mothering issues. Last year we held the first research project of its kind, entitled 'To Be or not to Be a Mother', whereby we conducted a group for women, both married and unmarried, who were deliberating whether to become mothers. The findings of this pioneer study, which received attention far and wide, will allow us to contribute to the knowledge accumulated to date on the meaning of motherhood and non-motherhood in contemporary Israeli society.

Another project on mothers was conducted in collaboration with the human resources department at Ben- Gurion University, whereby we opened a group aimed at university personnel who had recently had a baby. We also held a workshop for female PhD candidates at Ben- Gurion University that focused on issues of combining motherhood and a career.

Alongside these projects, over the last two years we have also expanded our psychotherapy service in terms of both the number of clients, and, subsequently, of therapists. We are also at an advanced stage of setting up a new unit within the psychotherapy service that will center on providing therapy and counseling for members of the LGBT community. This new service will be the first of its kind in the Negev region, and shall serve as important infrastructure for studies on treating the LGBT community. As part of my work I also promoted an upgraded website for the center, and its broad activity in both the academic and community spheres is now displayed online in English as well as Hebrew.

I would like to take this opportunity to thank each and every one of you, friends of the center, as well as the wonderful and committed team at the center, for all your faith in me and the support you have offered over the years. Our collaboration has led the center to great achievements. I wish Prof. Julie Cwikel success in continuing to head the center towards many more.

## **Center Research and Community Activities**

We invite you to browse through our 2015 annual report, which describes the research and community activities of the Center, now in its sixteenth year. We continue to expand our research on women's health in directions that overlap with medicine, sociology, social work and basic sciences. We are firm believers in the importance of the family unit and in our research continue to examine the roles of fathers and how alternative family structures can support the healthy functioning of women as individuals and family members. We use our website, [www.bgu.ac.il/womcen](http://www.bgu.ac.il/womcen), and the Facebook pages to promote more interaction with the broader community of scholars, women residents of the Negev and BGU university staff and students. In addition, we have started to explore in several studies, the role of Skype and internet as therapeutic tools.

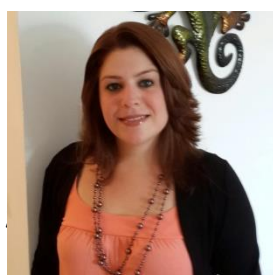
The continued stresses associated with the security situation make work in the global context more challenging, adding to the distress of mothers and families. We are glad that we have two community projects, Mom to Mom and Isha Be-Shela, can offer support for dealing with these stressors.

We want to thank our wonderful staff members for their devoted work and commitment to promote the Center's vision, Ms. Nirit Segal, Ms. Limor Niego and Ms. Vered Deichmann. Both Limor and Vered have successfully been running Mom to Mom and Isha Be-Shela, respectively.

We sadly part from our fabulous Center administrator, Ms. Nirit Segal, who is leaving us for another position outside BGU. Her work over 11 years at the Center added to the success of all of our endeavors and she has left her mark on the many projects taking place in the Center. Her clear-sighted administrative and personal leadership of the Center showed the best side possible to those who interacted with us. We are very grateful for all her work, thoughtful investment and "heart" and we offer her our deepest appreciation. We wish her all success for her career ahead.



We welcome the new Center administrator, Ms. Kineret Grably and wish her luck.



## **Research Activities**

### **Examining Treatment Preferences for Women Post-Partum, With and Without Post-Partum Depression**

This research focuses on the treatment preferences of women after childbirth, including options for web-based treatment, treatment by telephone and through groups. Prof. Orly Sarid and Prof. Julie Cwikel are beginning to analyze the data set on 1,000 women collected from the Rehovot region on their treatment preferences in the face of post-partum depression or anxiety. This is a grant funded by the Gertner Institute for Epidemiology and Health Policy Research. This grant supports the Ph.D. research of Meital Simhi, who is being jointly supervised by Prof. Sarid and Prof. Cwikel. The results are expected to have major importance in the development of services for new mothers.

### **Extending palliative care services to cancer patients and their families through SKYPE**

Women in the family, wives, daughters and other extended family members, provide most of the caregiving for cancer patients. Sometimes, women themselves are the cancer patients. We are continuing to explore how to involve the use of SKYPE based interventions to benefit cancer patients and their primary caregivers. The research has been in collaboration with Prof. Pesach Schwartzman of the Faculty of Medicine, Community Health department, together with his doctoral student, Ms. Tali Samson. We received the ethics committee approval and are now going ahead with the pilot project together with the palliative care staff in the Negev.

### **Exploring the use of e-therapy techniques in social work**

As a spinoff of the study mentioned above, we are exploring how social workers can use techniques using SKYPE to provide e-therapy. Together with Tali Samson and Dr. Enav Friedmann, we conducted a web-based interview and collected data on how social workers envision including SKYPE options and e-therapy in their work with diverse client populations. We are now in the process of analyzing the data.

## **CB-ART (cognitive behavioral and art-based interventions strategies, collaborative work with Monash University in perinatal mental health)**

Building on this treatment innovation, which has spawned a number of publications by Dr. Ephrat Huss, Prof. Orly Sarid, & Prof. Julie Cwikel, we are collaborating in a project funded by the Pratt Foundation through a special BGU-Monash University grant initiative. Our colleagues from the Monash University, Prof. Jane Fisher and Dr. Heather Rowe of the Jeanne Haile Research Center are replicating our protocol in Melbourne to reduce perinatal depression and anxiety. This year we have tested their program, called WAWA (Why Are We Anxious?) designed to work with new mothers around common anxieties that present during pregnancy and in the post-partum period. This intervention took place with new mothers using a workbook based intervention procedure. We are continuing to recruit mothers for this project.

## **Art-Based Trauma Assessment for Women in the Army**

An article was published this year relating to the army experiences of women in the army, jointly written by Dr. Ephrat Huss and Prof. Julie Cwikel. We continue to analyze the data collected on sources of stress and resilience of students who served in the Israel Defense Forces (IDF). We hope this initiative will further our understanding of the impact of combat and non-combat army-related experiences on how women return to "normative" roles in society. This study was funded by the Brandeis University's Hadassah-Brandeis Institute and is being jointly conducted by Dr. Ephrat Huss and Prof. Julie Cwikel. The two MA students, Ms. Agam Marom and Ms. Miri Kogan completed their studies.

## **The Effectiveness of CB-ART Workshops in Reducing Security-related Stress**

During Operation Protective Edge the Center held CB-ART workshops offering a combination of guided imagery and drawing, mentioned above. These workshops were followed by an evaluation study in order to assess the effectiveness of these workshops in reducing security-related stress and in transforming security-related stressful-memories. We are now analyzing the data collected. This research is led by Dr. Dorit Segal-Engelchin, Prof. Orly Sarid, Dr. Ephrat Huss and Prof. Julie Cwikel.

## **The Health and Quality of Life of Women and Men in Diverse Family**

### **Configurations**

Dr. Dorit Segal-Engelchin continues to work on her study of the effects of diverse family configurations on women's health and quality of life. The study compares differences in quality of life and health outcomes among married mothers, single mothers by choice, mothers in hetero-gay families, divorced mothers, and partnered and un-partnered lesbian mothers.

Based on her initial findings on the women in diverse family configurations, she is conducting a new study designed to examine the impact of family structure on men's health and quality of life. Data has been collected and is now being analyzed.

### **Mothers' Strategies in Strengthening Daughters' Body Image**

Following the fruitful collaboration between Dr. Maya Maor from gender studies and Prof. Julie Cwikel, an article was published in *Feminism and Psychology*. This publication led to reports and interviews in the media and a synopsis of this research was also published in the November issue of *Galileo* magazine (Hebrew). The findings from this study are now being further expanded in the PhD work of Ms. Efrat Cohen-Noyman, who is collecting data on how mothers can help their teenage daughters develop a positive body image and avoid eating disorders.





## **Culturally Sensitive Medical Care: Hospice Services and the Bedouin Population**

In collaboration with Dr. Yoram Singer, head of the Negev Hospice Services, and Dr. Maya Maor, submitted an article on how hospice medical professionals work in a culturally sensitive way with Bedouin patients in a hospice service.

## **Two John R. Goldsmith Prize Winners**

This year, two promising women scientists were the prize winners for environmental health and public health innovations in memory of Prof. John R. Goldsmith. Ms. Helena Krasnov-Furman from Geography and Epidemiology, won the prize for her innovative work on the role of dust storms in compromising the health of populations in the Negev. She has published several papers in this area and is considered an expert in her field. Her supervisors were Prof. Itzhak Katra from Geography and Prof. Michael Friger from Epidemiology.

The second student, Ms. Zainab Taybe, a MA student from Jordan, was honored for her work on isolating and characterizes the anti-cancer properties of *Asteriscus Graveolens*, a plant that grows commonly around the Negev (see photo below). Her supervisors were Prof. Rivki Ofir and Prof. Simon Barak, from Sde Boker Desert Research. She is continuing her research at the Weizmann Institute in Rehovot.



**Goldsmith Memorial Prize Recipients: 2005-2015**

<b>Name of Scholar, Year of Prize</b>	<b>Title of Research</b>	<b>Department, Degree</b>
Riki Ochayon (2005)	"Exposure to Environmental Risk Factors Associated with Cancer Among Kibbutz Members From Ein Hashlosha in the Western Negev."	MPH
Ayala Kanfi (2006)	"Chronic Morbidity and Occupational Exposures Among Workers of the Nuclear Research Center in the Negev."	PhD, Department of Epidemiology
Ilana Mealem (2008)	"The Management of Solid Waste in Recognized and Unrecognized Bedouin Villages of the Negev: Social Context, Impacts, and Recommendations."	MA with Honors, Department of Man in the Desert
Dafna Granit Dgani (2009)	"Encouragement of Exploration Among Young People Studying in Environmental Studies Through the Society for the Protection of Nature in Israel (SPNI)."	PhD, Department of Education
Tsafnat Test (2009)	"The influence of Hearing Impairment on Sleep Quality Among Workers Exposed to Harmful Noise."	Medical Student
Michal Ruzal-Mendelevich (2010)	Particle Grouping, a New Method for Reducing Emission of Sub-Micron Particles From Diesel Engines."	PhD, Department of Environmental Engineering
Alina Vodonos (2011)	"Developing a Questionnaire for Assessing Exposure to Risk Factors for Adverse Pregnancy Outcomes: a Validation Study."	MPH
Naama Buzaglo (2011)	"Was the Military Operation 'Cast Lead' a Risk Factor for Preterm Deliveries?"	MA, Emergency Medicine
Sarit Oriel-Levy (2012)	"The Importance of Understanding the Neurobehavioral Deficit Caused by Early Exposure to Organophosphate Pesticide during Early Brain Development on Mice."	PhD Department of Psychology
John-Michael Davis (2013)	"The informal e-waste system of Israel-Palestine: Contexts, problems and ways forward."	PhD Department of Geography Memorial University MA, Environmental Studies Ben-Gurion University
Maayan Yitshak-Sade (2013)	"Air pollution and Cardiovascular Risk Factors, Morbidity and Mortality: Spatial & Temporal Associations."	PhD Faculty of Health Sciences
Helena Furman (Krasnov) (2015)	"Dynamics of particulate matter from desert dust: integration of retrospective & prospective analyses with linkage to human health in an arid urban environment".	PhD Department of Geography and Environmental Development
Zainab Heidar Mahmoud Tayeh (2015)	"Mechanism of Action of <i>Asteriscus Graveolens</i> as an Anticancer Agent."	MA Department of Geography & Environmental Development, Sde Boker

## **Postdoctoral Researcher in the Center**

Dr. Orna Donath has joined our Center as a postdoctoral fellow a year ago. Dr. Donath has completed her PhD dissertation in the Department of Sociology at Tel-Aviv University. She has conducted two innovative qualitative studies related to family choices. The first study, culminated in a book (2011) – "Making a Choice. Being Childfree in Israel". Her second study, which she conducted as part of her PhD research, focused on Israeli Jewish women who regret becoming mothers.

Based on her previous research findings, she carried out a group intervention, the first of its kind in Israel, for both single and married women who are considering motherhood. Her postdoctoral study focuses on the views and experiences of the women who will participate in the group. Dr. Donath's research project is being conducted under the guidance of Dr. Dorit Segal-Engelchin and Dr. Niza Berkowitz from the Gender Studies Program at BGU.

## **Graduate Students Creating New Research in Women's Health**

### **PhD Students**

***Tzipi Hornik-Lurie*** completed her thesis: "Challenges to Israel's Primary Health Care System in the Treatment of Mental Health Problems among Those Seeking Care - Implications for Health Care Policy". Three papers were published from her thesis research in: 1) *Complementary Therapies in Medicine* 2) *Israel Journal of Psychiatry and related sciences* and 3) *Psychiatric Services*. She was supervised by Prof. Julie Cwikel.

***Yael Damri*** finished collecting data for her thesis on the reflective capacity of parents and their school-aged children among families with attention-deficit and hyperactivity disorder (ADHD), compared to families without ADHD. The study is based on the mentalization theories of Profs. Peter Fonagy and Ariete Slade, and is supervised by Prof. Cwikel, Prof. Naama Atzaba-Poria and Dr. Shosh Arbel from Soroka Medical Center's Child Psychiatry Unit.

**Avigdor Kaner** has developed an innovative internet-based group intervention for new fathers, based on his initial findings on the experiences of new fathers during the first year postpartum. His study is designed to evaluate the effectiveness of this unique intervention for new fathers. He is now in the process of conducting on-line groups for new fathers. He has completed nine groups and is now starting his tenth. Interest in his innovative project has led one of the TV channels to produce a special program on the needs of fathers in the transition to parenthood and Avigdor is a major consultant on this project. Avigdor is being supervised by Dr. Dorit Segal-Engelchin and Prof. Julie Cwikel.

**Efrat Cohen-Noyman**, PhD candidate, continues to collect data on her research: “The effect of the mother-daughter relationship on the development of positive body image among girls in childhood and adolescence”. She is supervised by Prof. Julie Cwikel. She is supervising a group of third year social work students who are learning about research while helping her to collect data.

**Shimrit Engelsman**, PhD candidate is making progress, collecting data on: “The birth experiences of Haredi Israeli women”. She is supervised by Dr. Ephrat Huss and Prof. Julie Cwikel. Part of her work will be presented at the 7<sup>th</sup> Israeli Conference of Qualitative Research.

**Nirit Volk**, PhD candidate. She is submitting a proposal on: “Empowerment of women who experienced child sexual abuse in their transition to motherhood”. She is supervised by Prof. Julie Cwikel. This year she is co-teaching the practicum course on Treatment of Women, together with Prof. Cwikel

### **Master's Students**

**Tali Nevo** has finished her thesis, entitled "The meaning of choosing an anonymous sperm donation as a route to motherhood from the perspective of single mothers by choice". She was supervised by Dr. Dorit Segal-Engelchin. She will be presenting her findings at the 7<sup>th</sup> Israeli Conference of Qualitative Research.

**Daya Perach-Yosef** finished her thesis on “Mothers and daughters' health behaviors: breastfeeding and body image: An inter-generational perspective”. She was supervised by Dr. Dorit Segal-Engelchin and Prof. Julie Cwikel.

**Aizen Talia**, has now finished her MA thesis and is now working on her PhD proposal on the experience of marriage among women who marry widowed fathers. To date, this group of mothers has received very little scholarly attention. She is being supervised by Dr. Dorit Segal-Engelchin. She will be presenting her findings at the 7<sup>th</sup> Israeli Conference of Qualitative Research.

**Oz Peperberg**, finished collecting data on how men cope with infertility and is now analyzing his data. He is being supervised by Dr. Dorit Segal-Engelchin, Prof. Orly Sarid and Dr. Iris Har-Vardi.

## **Community Activities**

### **Mom to Mom - Prize Winner for Outstanding Volunteer Organization 2015**

Mom to Mom is now completing its 10<sup>th</sup> year, providing support for new mothers and their infants in Beer-Sheva and the Negev. This year Mom to Mom was selected as the outstanding volunteer organization for 2015 by the Beer-Sheva Municipality. The award was bestowed at a special ceremony with Beer-Sheva Mayor Ruvik Danilovich on November 23<sup>rd</sup>, 2015.

"Mom to Mom" is a project designed to help mothers cope with the first year of parenting through home visits of volunteer mothers. The aim is to provide support and guidance to mothers of the Negev who feel that they lack adequate support to make the transition smoothly. The security and economic situations of the Negev present unique challenges, complicated by the fact that more than 30% of the population is new immigrants – many of whom are cut off from traditional familial and social support networks. Home visits are provided once a week up to one year post-partum by experienced mothers who are trained and supervised by Ms. Limor Niego (MSW), with the administrative support of Ms. Nirit Segal. Over the last nine years, the program has helped over 400 new mothers and trained over 200 volunteer mothers.

More than 95% of participants would recommend the program to a friend and 42% of volunteers have returned to mentor another new mother, some as many as five mothers

over the years. "Mom to Mom" originated with Jewish Family and Children's Services of Boston and was brought to Israel by Dr. Marsha Kaitz, a developmental psychologist at the Hebrew University of Jerusalem who runs such a project and provided the initial training for BGU's staff.

We described the interaction between the volunteers and the mothers: "The award recognizes the important role that our volunteers play in the lives of new mothers from around the Negev. As professionals, we train and support the volunteers, who embrace the mothers, who hug their infants, bringing positive changes throughout the family, creating ripple effects based on secure attachment. We at the Center want to acknowledge the help we have received from donors and from health care professionals who volunteer their time to give us professional backing. The model is so successful that we are hoping it will be duplicated throughout Beer Sheva."

One of its important features is that evaluations have found Mom to Mom most effective in preventing mental health distress among the birthing mothers and in developing a positive mother-infant bond for those in the project. Our evaluation has shown that it is very effective in preventing and treating perinatal mood and anxiety disorders, (what we used to call post-partum depression). Moreover, evaluations of such programs shows that children whose mothers were in "Mom to Mom" programs are more communicative, are higher achievers in school, and are perceived as well adjusted by their teachers.

For the birthing mothers, the opportunity to develop a personal relationship with an experienced mother helps builds their confidence and their problem-solving abilities. These networks have proven to be an invaluable resource during times of security stress, when leaving home is complicated by worry about safety. For the volunteer mothers, their investment in a mother struggling with challenges that they have experienced themselves offers them a way to make a meaningful contribution to another woman and to her infant, and thus to the larger community of women, children and families.

We also continued running our morning mothers group, which enables mothers to meet once a week with their infants to hear a lecture, to network with each other and to receive attention to individual issues in mothering. The major topics presented in this

year's group included: promoting good sleep patterns in infants, breastfeeding support, exercise for moms after birth, reading to babies and infants, healthy nutrition for moms and babies, positive parenting including coping with issues of safety. This year, we joined forces with the employee assistance programs at BGU to offer a group for employees who were on maternity leave. This closed group including many of the same topics as were in the open mother's group.

Throughout the past year, over 30 mothers had benefited from participation in the mothers group by acquiring knowledge concerning mothering infants and establishing supportive contacts and social circles with other mothers. To meet the growing demand for the group format, we opened an additional mothers' group that met in the afternoon, run by the nurse and breastfeeding consultant, Nina Batashivili. This group was especially organized for mothers who had returned to work after maternity leave.

This year, we continued our collaboration with the neonatal unit at Soroka University Hospital. The volunteers visited the NICU and now we are giving services to several mothers of premature infants. Pregnant mothers at high risk were matched to two volunteer midwives who work at Soroka Hospital, Karen Levitin and Sarit Steinberg. This allowed for special attention to be provided to five mothers coming to give birth who were previously followed in the Mom to Mom project.

In order to honor the memory of the slain grandson of our volunteer, Paulina Tregerman, we are dedicating the meeting room for mothers and their infants in his name. Tragically, Daniel was killed in Operation Protective Edge last summer.



Ms. Limor Niego (Mom to Mom Coordinator) and Volunteers

## **Isha Be-Shela – Counselling Service for Women in the Negev**

The Center's counselling service, which is the first counselling service in the Negev designed specifically to meet the needs of women, has now been operating for seven years. During these years, this service has become a well-known and highly regarded mental health service in the Negev. This is reflected in both the growing number of clients who seek our counselling services, including male clients, and in the growing referrals from the professional community.

Since the beginning of the project, we have seen 465 women and 25 men in psychotherapy treatment, with the average age of 34. As in previous years, many of our clients this year have reported significant financial problems and we hope we can expand the options to subsidize their treatment through the generosity of our donors.

Our counselling service is led by Vered Deichman, psychotherapist, MSW, together with Dr. Ruth Sitton, psychologist, Dr. Dorit Segal-Engelchin and Prof. Julie Cwikel. The staff now includes 13 psychotherapists, including two male therapists, all of whom are senior psychotherapists. We also are providing training for three students who are doing their field placement from the school of psychotherapy here in Beer Sheva. Our staff provides individual psychotherapy to women and men from all different sectors from throughout the Negev. Over the course of the year, we met with professionals who gave outstanding lectures on different topics relating to therapeutic work with women.

This year we started to prepare a collection of case studies on different types of psychotherapy, based on the therapeutic experience of our staff members. Different aspects of treatment and research on women will be the focus of this new volume. Editors for this volume include Dr. Dorit Segal-Engelchin, Prof. Orly Sarid, Prof. Julie Cwikel with the assistance of Dr. Ruth Sitton and Dr. Gali Zohar.

## **Innovative services for women in new family configurations**

Dr. Orna Donat, who is a post-doctoral fellow at the Center led a very successful group entitled "To be or not to be a mother". This group, the first of its kind in Israel was designed to allow a space to contemplate whether or not they want to be mothers and are capable of raising children. The 10 meeting group was designed for both single and married women. It was so successful that requests have been coming in from around the country for a second group, which is in the process of formation.



This work was made possible through the generous support of the Robert Sillins Foundation.

## **Publications and Academic Activities of Center Researchers and Scholars (Listed in Alphabetical Order by Last Name)**

With great pride we share with you the publications and academic activities of the Center's researchers and scholars during 2015.

### **Dr. Orit Ben-Zvi Assaraf**

Her Ph.D. student, Wisam Sedawi who was jointly supervised in her MA students by Dr. Assaraf and Prof. Cwikel, won the prestigious Azrieli Fellowship for 2015 (one of only two at BGU). Wisam Sedawi is studying how students from Bedouin settlements develop as they undergo a place-based learning program at the Hebron River and its surroundings. In her research, Wisam asks how this place-based learning influences the students' sense of place, nature attachment and observation skills. Wisam believes that education for sustainable environment is at the heart of environmental literacy, and intends to take an active part in strengthening the connection between individuals and their environment.

### **Conference**

2015 Cwikel, J. Meallem, I, Sedawi W & **Ben Zvi Assaraf**, O. Addressing health inequalities of the Bedouin Population of the Negev through focused environmental research International Society for Environmental Epidemiology, Sao Paulo, Brazil, Aug 30 – Sept. 2, 2015.

### **Prof. Julie Cwikel**

### **Publications**

Huss, E., & **Cwikel**, J. (2015). Women's stress in compulsory army service in Israel: A Gendered Perspective. 'Work' Journal: Special issue on women in the army. 50(1) January.

Sarid, O., Shraga, Y., **Cwikel**, J., Pereg, A., Reuveni, H. (2015). The effect of ethno-culture and health beliefs on mothers' vaccination behavior. Bitahon Soziali (Social Security – Hebrew), 96:87-112.

Halperin, O. Sarid, O. & **Cwikel, J.** (2015). The influence of childbirth experiences on women's post-partum traumatic stress symptoms: a comparison between Israeli Jewish and Arab women. Midwifery. 31(6), 625-632.

Maor, M. & **Cwikel, J.** (2015). Mothers' strategies to strengthen their daughters' body image. Feminism & Psychology. Pp. 1-19, First online: Sept. 20, 2015

Czamanski-Cohen, J., Sarid, O., **Cwikel, J.** Douvdevani, A, Levitas, E., Lunenfeld, E. & Har-Vardi, I. (2015). Cell-free DNA and telomere length among women undergoing in vitro fertilization treatment. Journal of Assisted Reproduction and Genetics, pp 1-7. First online: 05 October 2015

### **Submitted**

Cwikel, J. (2015). Development and Evaluation of the Adult Daughter-Mother Relationship Questionnaire (ADMRQ).

### **Research Grants**

2014-2016 Preferences and barriers to treatment for post-partum depression among Israeli women. Joint project with Prof. Orly Sarid, Israeli National Institute for Health Policy Research. 2 years.

2014-2017 Developing resources for cancer patients and their families using remote computers access and webcam. Yad la-Holei Haoncologi.

2014-2017 Expanding treatment options for new mothers with anxiety and depressive disorders, a joint BGU-Monash research program. Co-investigators: Prof. Orly Sarid, Dr. Ephrat Huss, Prof. Jane Fisher and Dr. Heather Rowe, 3 years.

### **Submitted grants**

ISF: An integrated model to predict service use among Israeli Jewish and Arab-Bedouin women at risk of postnatal mood disorders and domestic violence. Sarid O.PI, Cwikel J. PI. Daoud N.PI.

Ministry of Science: Promoting the role of women in STEM industries using a marketing model: Cwikel, J. P.I. and Friedmann, E. co-PI.

### **Presentations at conferences**

2015 Czamanski-Cohen, J., Sarid,O., **Cwikel, J.** , Douvdevani, A, Lunenfeld, E. & Har-Vardi, I. The relationship between cell free DNA and telomere length in women undergoing in vitro fertilization. Poster- presented at the annual American Psychosomatic Society March 2015, Savannah Georgia

2015 Prokashev, S., Hornik-Lurie, T., Geffen, D. B. & **Cwikel, J.** Cognitive concordance and discordance between objective cognitive function and subjective complaints among breast cancer patients. Poster. The European Association for Behavioral & Cognitive Therapies. Jerusalem, August 31 - September 3, 2015

2015 Huss, E., Sarid, O., Segal-Engelchin, D. & **Cwikel, J.** Stress reduction through images. The 36th Annual Conference of the Stress and Anxiety Research Society Stress & Anxiety: Resilience, Coping & Thriving June 30 – July 2, 2015 Tel Aviv University, Israel.

2015 **Cwikel, J.** Meallem, I, Sedawi W & Ben Zvi Assaraf, O. Addressing health inequalities of the Bedouin Population of the Negev through focused environmental research. International Society for Environmental Epidemiology, Sao Paulo, Brazil, Aug 30 – Sept. 2, 2015.

2015 **Cwikel, J.** Post-partum depression: tailoring treatment for different populations. Israeli Physiotherapy Society, Women's Health Section in memory of Judith Sarig, z'l. Oct 26<sup>th</sup>, 2015, Soroka Hospital

2015 **Cwikel, J.** Innovations in women's health research. Opening lecture for MA students in gender research track. Bar Ilan University. Oct 19, 2015

### **Dr. Johanna Czamanski-Cohen**

#### **Publications**

**Czamanski-Cohen, J.,** Sarid, O., Cwikel, J., Lunenfeld, E., Douvdevani, A., Levitas, E. & Har-Vardi, I. (2015). Cell free DNA and telomere length among women undergoing in vitro fertilization. *Journal of Assisted Reproduction and Genetics*. DOI 10.1007/s10815-015-0581-4 IF 1.7; 53/173 in Obstetrics and Gynecology (Q2).

Shoshani, A., Mifano, K. & **Czamanski-Cohen, J.** (2015). The Effects of the Make a Wish Intervention on Psychiatric Symptoms and Health-Related Quality of Life of Children with Cancer: A Randomised Controlled Trial. *Quality of Life Research*. DOI: 10.1007/s11136-015-1148-7 IF 2.49; Public Health, Environmental and Occupational Health (Q1).

#### **Presentation at a Conference**

Johanna presented a poster on “Cell free DNA and telomere length among women undergoing in vitro fertilization” at the American Psychosomatic Society (APS) annual conference in Savannah, Georgia in March 2015.

Johanna Czamanski-Cohen is completing her post-doctoral studies at the University of Arizona Cancer Center's R25T Cancer Prevention and Control Translational Research NIH funded training program. When her post-doc ends, she will receive affiliation as a Research Assistant in the department of Psychiatry at the University of Arizona. She is currently teaching a class on the use of art as a therapeutic tool at Bar Ilan University. Johanna has obtained a competitive spot in the 2016 Massachusetts General Hospital Cancer Center Workshop on Research Methods in Supportive Oncology, which will take place in February of 2016.

### **Ms. Tzipi Hornik-Lurie**

#### **Publications**

Feinson, M.C. and **Hornik-Lurie, T.** (2016) Body Dissatisfaction and the Relevance of Religiosity: A Focus on ultra-Orthodox Jews in a Community Study of Adult Women. *Clinical Social Work Journal*. (forthcoming)

#### **Submitted**

Feinson, M.C. and **Hornik-Lurie, T.** 'Not Good Enough:' Exploring Self-Criticism's Role as a Mediator between Childhood Emotional Abuse & Adult Binge Eating

#### **Presentation at a Conference**

Feinson, M.C. and **Hornik-Lurie, T.** 'Not Good Enough:' Exploring Childhood Abuse, Binge Eating & Unique Roles of Self-Criticism and Anger among Adult Jewish Women. Poster presented in the 25<sup>th</sup> Annual Conference of The Renfrew Center Foundation, November 13-15, 2015, Philadelphia, PA.

Prokasheva, S. **Hornik-Lurie, T.** Geffen, D. and Cwikel, J. "Concordance between Objective Cognitive Function and Subjective Cognitive Complaints among Breast Cancer Patients", Poster presented in the 45<sup>th</sup> Annual EABCT Congress CBT, August 31- September 3, 2015, Jerusalem, Israel.

**Hornik-Lurie, T.** Lerner, Y. "Do rehabilitation participants progress from more to less supportive vocational services in Israel? A five year nationwide cohort." Oral presentation in the 9<sup>th</sup> World Congress of the International Society of Physical and Rehabilitation Medicine (ISPRM), Jun 19-23, 2015: Berlin, Germany.

### **Dr. Ephrat Huss**

**Huss, E., & Cwikel, J.** (2015). Women's stress in compulsory army service in Israel: A Gendered Perspective. *Work Journal: Special issue on women in the army*. 50(1) January.

Kaufman, R., **Huss, E.**, & Segal-Engelchin, D. (2015). Arts based research as a way to bridge emotional versus social knowledge of community workers. *The International Journal of Social, Political and Community Agendas in the Arts*.

**Huss, E., & Maor, H.** (2015). Towards an integrative theory for understanding art discourses. *Visual Art Research*.

### **Presentation at a Conference**

2015 **Huss, E., Sarid, O., Segal-Engelchin, D. & Cwikel, J.** Stress reduction through images. The 36th Annual Conference of the Stress and Anxiety Research Society Stress & Anxiety: Resilience, Coping & Thriving June 30 – July 2, 2015 Tel Aviv

### **Ms. Orly Liberman**

Shor, V., Grinstein-Cohen, O., Reinshtein, J., **Liberman, O.**, & Delbar, V. (2015). Health-related quality of life and sense of coherence among partners of women with breast cancer in Israel. *European Journal of Oncology Nursing*, 19(1), 18-22.

Melech-Shalom S., **Liberman O.**, Odeh R. & Grinstein-Cohen O. Alone with all this Pain: Treating a Herpes Zoster Geriatric Patient in a Rural Clinic in Israel. *Annals of Nursing and Practice*. (Accepted for publication)

### **Dr. Michal Liebergall-Wischnitzer**

#### **Publications**

Hochner, H, Tenfelde, S, Abu Ahmad, W, **Liebergall-Wischnitzer, M.** (2015). Gum Chewing and Gastrointestinal Function following Cesarean Delivery: A Systematic Review and Meta-analysis. Accepted for publication. *Journal of Clinical Nursing*.

Lipschuetz., M. Cohen., **S. Liebergall-Wischnitzer.**, M. Zbedat., K. Hochner-Celnikier., D., Lavy.Y, & Yagel, S. Degree of bother from pelvic floor dysfunction in women one year after first delivery. *European Journal of Obstetrics & gynecology and Reproductive Biology*. Accepted for publication, May. 20, 2015.

**Liebergall-Wischnitzer, M.,** Buyum, M., & DeKeyser Ganz, F.. (2015). Health Promoting Lifestyle among Israeli Adult Survivors of Childhood Cancer. Accepted for publication, May, 2015, *Journal of Pediatric Oncology Nursing*.

#### **Presentations at Conferences**

ICS 2015, International Continence Society, Montreal, Canada. Are there differences in Urinary Incontinence type, symptoms, and quality of life between Grand Multipara and Non-Grand Multipara Menopausal Women? Iris Shlain, Yuval Lavy, Revital Arbel, David Shvieky, Anna Woloski Wruble, Michal **Liebergall-Wischnitzer** (present), ePoster with open presentation.

#### **Contribution to the Community**

Community volunteers' training course, Orthodox community, Jerusalem, Haddasah Women's Health project, Jerusalem: Pelvic Floor Relaxation and Women's Health.

#### **Dr. Sheryl Mendlinger, Northeastern University, International Relations**

#### **Publications and Peer Review Conference Proceedings, 2015**

*GeoToursim 34rd Annual ISTTE Conference*, Conference Proceedings: “The impact of tourism on local community: A case study of Ngorongoro conservation area”, by Samuel Mendlinger, Asantael Williams Melita, & Sheryl E. **Mendlinger**. Charlotte, NC

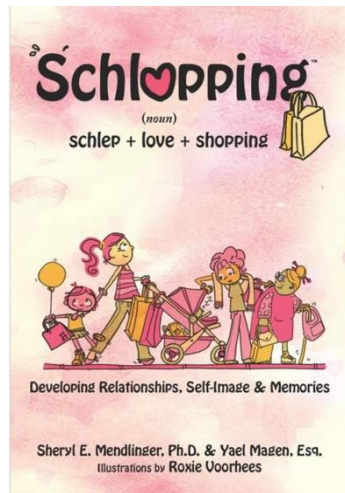
#### **Presentations at Conferences**

Society for Menstrual Cycle Research (SMCR), Boston, MA, June, 2015:  
“Menstruation and Reproductive Practices - Religion and Traditions and the Influence of Immigration on Mother-Daughter Dyads across Cultures.”

## Book

**Schlopping - Developing Relationships, Self-Image & Memories (noun) schlep + love + shopping by Sheryl E. Mendlinger, Ph.D. & Yael Magen, Esq. Me & Ma, Co. 2015.**

This April saw the long awaiting publication of *Schlopping* written by the mother-daughter team of Dr. Sheryl Mendlinger and Yael Magen.



The book and the word were conceived from a deep understanding of the importance of shopping with their family and friends. Schlopping is a new word that the authors invented that is a linguistic blend of **sch(lep)+lo(ve) +(sho)pping** and is defined as the “ritual of schlepping with someone you love while

shopping.” Schlopping is not about the money you spend

or what you buy, it is an activity you do with a loved one that acts as a relationship enhancer; it happens when you decide you want to spend time with someone you love. The book is written from two different perspectives, showing how this pair finds answers to life’s challenges through “schlopping,” over their life course.

The impetus of Sheryl's research on women’s health started many years ago when her daughter Yael was in her teens in the 1990’s and told her mother that her friends said ‘if you use tampons you could lose your virginity’ and therefore none of them were using tampons. They lived in a diverse community and many of her friends’ parents immigrated from North Africa, Iraq, and Europe to Israel. Sheryl comments: “As an American who immigrated to Israel in 1969, I found this very interesting, since my own mother who was born in the USA in 1927, had used them all of her adult life. I started thinking that what we learn from our mothers, especially about menstruation, about body image, and health in general, can impact our lives in so many ways. This was the impetus for the choice of my PhD topic: “Knowledge Acquisition: Examining Intergenerational and Cultural Effects of Origins and Influences of Women’s Health Behaviors in Israel” at the Ben-Gurion University, Center for Women’s Health Studies and Promotion, under the supervision of Prof. Julie Cwikel. I examined mother-adult daughter dyads from North Africa, Ethiopia, Europe, North America, the Former Soviet Union, and Israeli born, in order to understand how mothers transmit knowledge about health behaviors to their daughters.”

“On a personal level, I always had a very complex relationship with both my mother and my daughter. I realize that one of the most profound and important ways that we have bonded over our lifetime was our love for shopping. One of the prominent themes in my research, was that the mother-daughter relationship often changed, for the better, after the adult daughter became a mother herself. After my daughter gave birth to her daughter, I took a ‘maternity leave’ and we used that time together to finally complete our book *Schlopping* that had been incubating in our minds for years prior. The time we spent writing together served as way to examine how our relationship had matured over time.” *Schlopping* was written as a tribute to our loved ones, showing the simple act of shopping is a tool for communication and developing relationships, self-image, and memories with family and friends. You know you have gone *schlopping* when you arrive home covered with sweat from the schlep, a heart filled with love, and bags in your hands.

### **Prof. Orly Sarid**

#### **Publications**

**Sarid, O.**, Shraga, Y., Pereg, A., Cwikel, J., Reuveni, H. (2015). The effect of ethno culture and health beliefs on mothers vaccination behavior. *Social Security*, 96, 87-112. (Hebrew)

Halperin, O., **Sarid, O.**, & Cwikel, J. (2015) The influence of childbirth experiences on women’s post-partum traumatic stress symptoms: a comparison between Israeli Jewish and Arab women. *Midwifery*, 31(6), 625-632.

Sandak, B., Huss, E., **Sarid, O.**, & Harel, D. (2015). Computational paradigm for tracking, analyzing and documenting dynamic processes in the creative arts and its use in artwork. *Plos One*, 10(6), e0126467.

Greenberg, D., Schwartz, D., Vardi, H., Friger, M., **Sarid, O.**, Slonim-Nevo, V., Odes, S. (In Press). Health-related utility weights in a cohort of real-world Crohn’s disease patients. *Journal of Crohn’s and Colitis*. jvj167.

Czamanski-Cohen, J., **Sarid, O.**, Cwikel, J., Douvdevani, A., Lunenfeld, A., Har-Vardi, I. (In Press). The relationship between Cell free DNA and telomere length in women undergoing in vitro Fertilization. *Journal of Assisted Reproduction and Genetics*.



## **Lectures and presentations**

Odes, S, Vardi, H, Friger, M, Schwartz, D, **Sarid, O**, Slonim-Nevo, V, Greenberg, D. (2015). Healthcare costs of a consecutive cohort of patients with ulcerative colitis and crohn's disease treated at tertiary medical center in Israel, ISPOR 20th Annual International Meeting, Philadelphia, USA, May 16-20 (Poster presentation).

Greenberg, D, Vardi, H, Schwartz, D, Friger, M, **Sarid, O**, Slonim-Nevo, V, Odes S. (2015). Predictors of health-related utility weights in a consecutive cohort of real-world Crohn's disease patients in Israel. Presented at the ISPOR 20<sup>th</sup> Annual International Meeting. Philadelphia, PA, May 16-20 (Poster presentation).

Vardi, H, Friger, M, **Sarid, O**, Greenberg, D, Schwartz, D, Slonim-Nevo, V, Odes, SH (2015). Characterization of variables impacting on the quality of life of Israeli patients with Crohn's disease. Digestive Disease Week (DDW), Washington DC, May 16-19 (Poster presentation).

Vardi H, Friger M, **Sarid O**, Greenberg D, Schwartz D, Slonim-Nevo V, Odes, S Characterization of Variables impacting on the Quality of Life of Israeli Patients with Crohn's Disease. Digestive Disease Week (DDW) 2015. May 16-19, Washington DC. (Poster presentation).

Odes, S., Sergienko, R., **Sarid, O.**, Friger, M., Vardi, H., Schwartz, D., Greenberg, D., Slonim-Nevo, V. Patient-reported Quality of Care in Crohn's Disease and its Social Correlations. Accepted as poster in South African Gastroenterological Society (SAGES) annual meeting, August 2015, Durban RSA.

Odes, O., Sergienko, R., **Sarid, O.**, Friger, M., Schwartz, M., Vardi, H., Greenberg, D., Slonim-Nevo, V. Subjective Pain in Crohn's Disease Patients affects their Psychological Function and Coping Strategies. A Survey of a Community-Based Cohort. Accepted as a poster at United European Gastroenterology Week meeting, Barcelona, 2015.

Schwartz, D., Chernin, E., Friger, M., **Sarid, O.**, Vardi, H., Greenberg, D., Slonim-Nevo, V., Odes, O. Surgery in adult Crohn's disease patients has limited impact on the medical and social burden of disease. Accepted as a poster at United European Gastroenterology Week meeting, Barcelona, 2015.

**Sarid, O.**, Slonim-Nevo, V., Vardi, H., Schwartz, D., Fich, A., Greenberg, D., Friger, M., Odes, S. (2015). Characterization of variables determining satisfaction with life in Crohn's disease patients. ECCO-Inflammatory bowel Diseases 10<sup>th</sup> conference, Barcelona, Spain, February 18-21 (Poster presentation).

Czamanski-Cohen, J., **Sarid, O.**, Cwikel, J., Douvdevani, A., Lunenfeld, & Har-Vardi, I. (2015). The relationship between cell free DNA and telomere length in women

undergoing in vitro fertilization. Poster presented at the American Society for Psychosomatic Medicine 73rd Annual Scientific Meeting, Savannah, GA, USA, March 18-21 (Poster presentation).

**Sarid, O.**, Segal Engelchin, D., Huss, E & Cwikel, J. (2015). Changing visual stressful images through drawing and imagination: a tool for reducing distress. WONCA conference: breaking down barriers: Bringing People Together. Dobrovnik, Croatia, 15th - 18th April (Oral presentation).

### **Seminars Presentation at universities and institutions**

2015 Stress and trauma among victims of natural disasters. Arava International Center for Agriculture Training. Sapir, Israel.

### **Research Grants**

2014-2016 Cwikel, J., **Sarid, O.**,(PI) Fisher, J., & Rowe. H. Monash Ben-Gurion Seed Fund: Expanding treatment options for new mothers with anxiety and depressive disorders. Total amount: \$50,000.

2014-2016 Cwikel, J., **Sarid, O.** (PI) & Magnezi, R. Israel National Institute for Health Policy and Health Services Research: Preferences and barriers to treatment for post-partum depression among Israeli women. Total amount: 109,060 NIS.

2013-2016 Odes, S., Friger, M., Greenberg, D., Slonim-Nevo, V., **Sarid, O.** (CI). The Leona M. and Harry B. Helmsley Charitable Trust: Socio-economic impact of Crohn's disease on the Israeli population. Total amount: \$570,350.

### **Submitted Grants**

2015 Interdisciplinary research BGU: Solution-focused and mindfulness-based intervention: The effect on quality of life and disease activity among patients with Crohn's disease. **Sarid, O.**, Slonim-Nevo, V., Schwartz, D., Friger, M., & Odes, S.H.

### **Dr. Dorit Segal-Engelchin**

### **Publications**

Kaufman R, Huss E, **Segal-Engelchin D.** (2015). Arts based research as way to bridge emotional versus social knowledge of community workers. *The International Journal of Social, Political and Community Agendas in the Arts*, 10(1), 1-12.

**Segal-Engelchin D, Kfir-Levi N, Neustaedtler SB, Mirsky J. (2015).** Mental pain among female suicide attempt survivors in Israel: An exploratory qualitative study. *International Journal of Mental Health and Addiction*, 13(4), 423-434.

**Segal-Engelchin, D., Huss, E., & Massry, N. (2015).** The experience of early marriage: Perspectives of engaged and married Muslim women in Israel. *Journal of Adolescent Research*. doi: 10.1177/0743558415605167

### **Presentations at Conferences**

Sarid, O., **Segal-Engelchin, D.**, Cwikel, J., Huss, E. (2015). Altering visual stressful images through guided imagery and drawing. The 13<sup>th</sup> Wonca World Rural Health Conference, April, Dubrovnik, Croatia.

Huss, E., **Segal-Engelchin, D.**, Massry, N. (2015). What we see and what we say in social work; Rational for using images in practice and research of youth. The 5<sup>th</sup> European Conference for Social Work Research (ECSWR), April, Ljubljana, Slovenia.

Huss, E., Sarid, O., **Segal-Engelchin, D.**, & Cwikel, J. (2015). Stress reduction through images. 36<sup>th</sup> Annual Conference of the Stress and Anxiety Research Society, June, Tel-Aviv University, Israel.

Kfir-Levin, N., **Segal-Engelchin, D.**, & Mirsky, J. (2015). Mental pain among female suicide attempt survivors in Israel: An exploratory qualitative study. The 4th European Conference on Mental Health, October, Riga, Latvia.

### **Awards**

Ben-Gurion University of the Negev, Rector's Prize for Excellence in Teaching

### **Prof. Ilana Shoham-Vardi**

Wolak T, **Shoham-Vardi I**, Sergienko R, Sheiner E. Renal function during pregnancy may predict risk of future hospitalization due to atherosclerotic-related morbidity. *Nephrology (Carlton)*. 2015 Jul 24. doi: 10.1111/nep.12575. [Epub ahead of print]PMID:26212137

Wolak T, **Shoham-Vardi I**, Sergienko R, Sheiner E. High potassium level during pregnancy is associated with future cardiovascular morbidity. *J Matern Fetal Neonatal Med*. 2015 Sep 4:1-4. [Epub ahead of print]PMID:25845276

Wolak T, **Shoham-Vardi I**, Sergienko R, Sheiner E. High Uric Acid Levels During Pregnancy Linked to Increased Risk for Future Atherosclerotic-Related Hospitalization. *J Clin Hypertens (Greenwich)*. 2015 Jun;17(6):481-5. doi: 10.1111/jch.12535. Epub 2015 Mar 23. PMID:25808139

Yaniv-Salem S, **Shoham-Vardi I**, Kessous R, Pariente G, Sergienko R, Sheiner E. Obesity in pregnancy: what's next? Long-term cardiovascular morbidity in a follow-up period of more than a decade. *J Matern Fetal Neonatal Med*. 2015 Jul 26:1-5. [Epub ahead of print] PMID:25731649

Beharier O, **Shoham-Vardi I**, Pariente G, Sergienko R, Kessous R, Baumfeld Y, Szaingurten-Solodkin I, Sheiner E. Gestational diabetes mellitus is a significant risk factor for long-term maternal renal disease. *J Clin Endocrinol Metab*. 2015 Apr;100(4):1412-6. doi: 10.1210/jc.2014-4474. Epub 2015 Feb 10. PMID: 25668200

Kessous R, **Shoham-Vardi I**, Pariente G, Sergienko R, Sheiner E. Long-term maternal atherosclerotic morbidity in women with pre-eclampsia. *Heart*. 2015 Mar;101(6):442-6. doi: 10.1136/heartjnl-2014-306571. Epub 2015 Jan 6. PMID: 25564558

Wainstock T, **Shoham-Vardi I**, Glasser S, Anteby E, Lerner-Geva L. Fetal sex modifies effects of prenatal stress exposure and adverse birth outcomes. *Stress*. 2015 Jan;18(1):49-56. doi: 10.3109/10253890.2014.974153. Epub 2014 Dec 29. PMID: 25319674

Erez Azulay C, Pariente G, **Shoham-Vardi I**, Kessous R, Sergienko R, Sheiner E.

Maternal anemia during pregnancy and subsequent risk for cardiovascular disease. *J Matern Fetal Neonatal Med*. 2015 Oct;28(15):1762-5. doi: 10.3109/14767058.2014.971743. Epub 2014 Oct 29. PMID:25270962

Arazi ES, Kessous R, **Shoham-Vardi I**, Pariente G, Sergienko R, Sheiner E. Is there an association between a history of placental abruption and long-term maternal renal complications? *J Matern Fetal Neonatal Med*. 2015 Sep;28(14):1641-6. doi: 10.3109/14767058.2014.967206. Epub 2014 Oct 10. PMID:25234099

Pariente G, **Shoham-Vardi I**, Kessous R, Sergienko R, Sheiner E. Is stillbirth associated with long-term atherosclerotic morbidity? *Am J Obstet Gynecol*. 2014 Oct;211(4):416.e1-12. doi: 10.1016/j.ajog.2014.07.032. Epub 2014 Jul 25. PMID: 25068554

Alfayumi-Zeadna S, Kaufman-Shriqui V, Zeadna A, Lauden A, **Shoham-Vardi I**. The association between sociodemographic characteristics and postpartum depression symptoms among Arab-Bedouin women in Southern Israel. *Depress Anxiety*. 2015 Feb;32(2):120-8. doi: 10.1002/da.22290. Epub 2014 Jul 10. PMID: 25044129

Waldman M, Sheiner E, Sergienko R, **Shoham-Vardi I**. Can we identify risk factors during pregnancy for thrombo-embolic events during the puerperium and later in life? *J Matern Fetal Neonatal Med*. 2015 Jun;28(9):1005-9. doi: 10.3109/14767058.2014.944155. Epub 2014 Jul 31. PMID:25012805

Daoud N, **Shoham-Vardi I**. Maternal perceptions of social context and adherence to maternal and child health (MCH) clinic recommendations among marginalized Bedouin mothers. *Matern Child Health J*. 2015 Mar;19(3):538-47. doi: 10.1007/s10995-014-1535-7.PMID:24927786

Okby R, **Shoham-Vardi I**, Sergienko R, Sheiner E. Twin pregnancy: is it a risk factor for long-term cardiovascular disease? *J Matern Fetal Neonatal Med*. 2015 Oct 1:1-5. [Epub ahead of print] PubMed PMID: 26429152.

Charach R, Wolak T, **Shoham-Vardi I**, Sergienko R, Shiener E. Can slight glucose intolerance during pregnancy predict future maternal atherosclerotic morbidity? *Diabet Med*. 2015 Nov 25. doi: 10.1111/dme.13036. [Epub ahead of print] PubMed PMID: 26606683

### ***Research Grants***

- 2013-5 Israeli Science Foundation. With Dr. Nihaya Daoud, Contribution of different forms of social capital: Bonding, bridging, and linking in explaining intimate partner violence during pregnancy and after birth among Arab and Jewish women in Israel.

### **Current students**

#### **M. Med Sc. and MPH Students**

*Hana Abokaf*: Pregnancy complications and childhood morbidity (Jointly with Prof. E Sheiner)

*Svetlana Shindel*: Compliance with treatment guidelines in patients presenting in ER with NSTMI (jointly with Dr. Gilutz)

#### **Ph.D. Students**

*Zvi Perry*: Laparoscopic Adjustable Gastric Banding and its results in unique study groups, a historical cohort study (proposal preparation (Jointly with S. Mizrahi-Soroka University Medical Center)

*Ricki Krispel- Ochayon*: Early fetal loss: The Association between air pollution and other major risk factors and spontaneous abortions among in southern Israel (Jointly with Prof. Michael Friger)

*Nava Braverman*: Obstetric services in Israel- Is there a need for change? (Jointly with Dr. D. van Dyke)

*Rasmiah Abu Rabia*: Service accessibility and users' characteristics as factors affecting utilization patterns of prenatal genetic services in the Bedouin Negev Population (Jointly with Prof. O. Birk)